



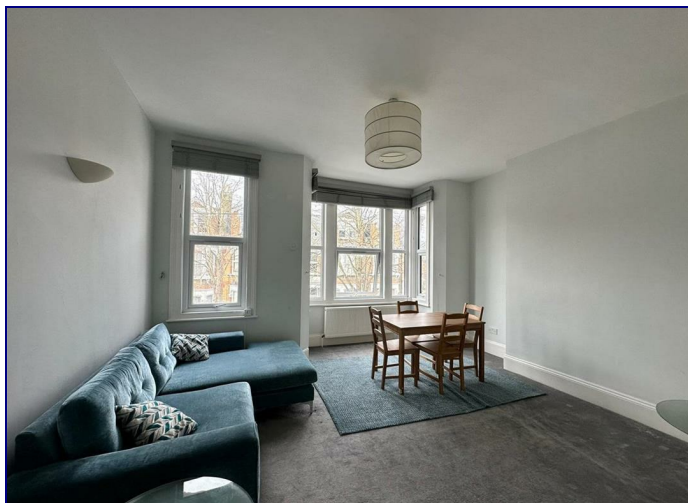
www.kings-group.net

248 Hoe Street
Walthamstow E17 3AX
Tel: 020 8521 1122

Cleveland Park Avenue, London, E17 7BP
£1,900 Per Month

This stunning two bedroom first floor period flat is perfectly located virtually next to Walthamstow Central and Walthamstow market. The flat offers bright and spacious living accommodation throughout. A lovely modern fully fitted kitchen diner with appliances and a recently fitted bathroom suite with a shower over the bath.

Call now for an immediate viewing.



Energy Efficiency Rating		
	Current	Potential
Very energy efficient - lower running costs		
(92 plus) A		
(81-91) B		
(69-80) C		
(55-68) D		
(39-54) E		
(21-38) F		
(1-20) G		
Not energy efficient - higher running costs		
England & Wales	EU Directive 2002/91/EC	

Environmental Impact (CO ₂) Rating		
	Current	Potential
Very environmentally friendly - lower CO2 emissions		
(92 plus) A		
(81-91) B		
(69-80) C		
(55-68) D		
(39-54) E		
(21-38) F		
(1-20) G		
Not environmentally friendly - higher CO2 emissions		
England & Wales	EU Directive 2002/91/EC	





Associated Offices in London, Essex and Hertfordshire
Kings Head Office Tudor Lodge, Burton Lane, Goffs Oak, Hertfordshire EN7 6SY Tel: 01707-872000

